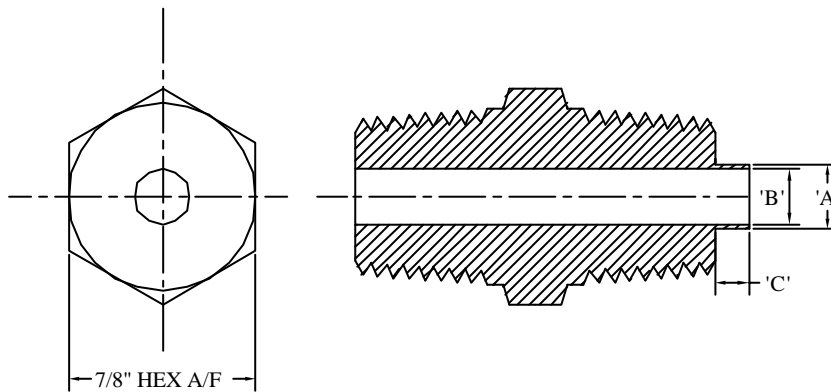
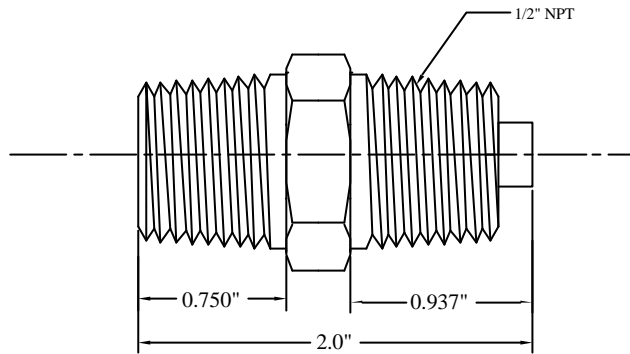


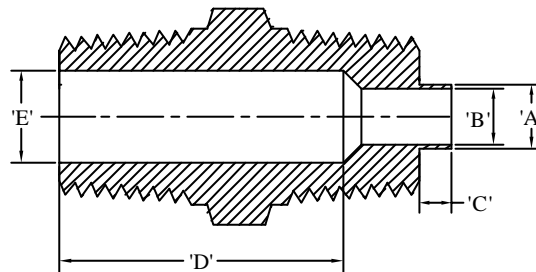
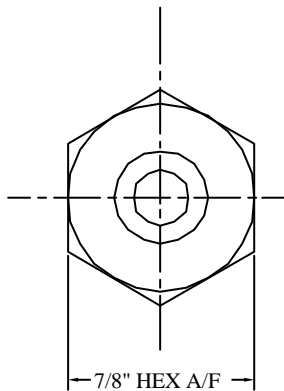
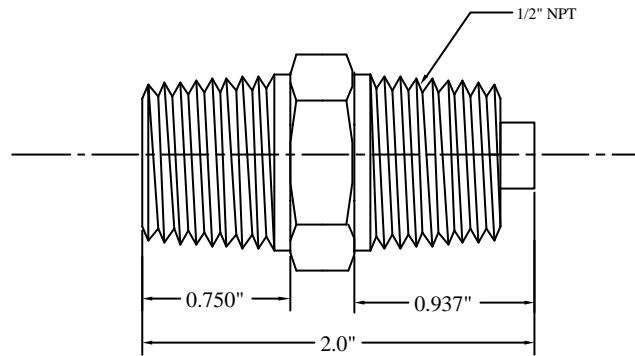
REV.	REASON FOR ISSUE	DATE	DRN.	CHKD.
0.00	PRELIM.REL.	12.03.00	D.K.D.	G.G.A
1.00	REL. FOR MANU.	12.06.00	D.K.D.	G.G.A



ALL DIMENSIONS ARE IN INCHES.

PART NO.	'A'	'B'	'C'	PROJECT/CLIENT	Aura Inc. D11/3,OKHALA IND. AREA, PHASE II, NEW DELHI INDIA. www.aurainc.com
ATHF -STB -01	0.374	0.261	0.187		
ATHF -STB -02	0.298	0.198	0.187	TITLE	
ATHF -STB -03	0.236	0.138	0.187	THERMOCOUPLE HEAD FITTINGS STRAIGHT THROUGH BORE	
MATERIAL: 316 SS				This drawing is the property of Aura Inc. Unauthorised reproduction is prohibited.	DRG NO :ATHF - STB -001

REV.	REASON FOR ISSUE	DATE	DRN.	CHKD.
0.00	PRELIM.REL.	23.04.00	D.K.D.	G.G.A
1.00	REL. FOR MANU.	12.07.00	D.K.D.	G.G.A



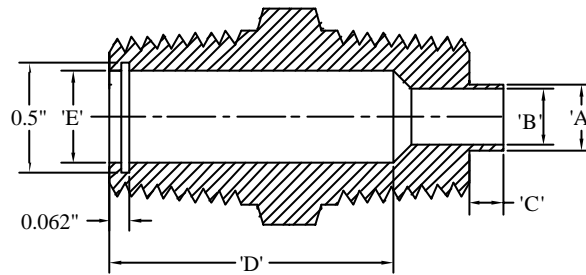
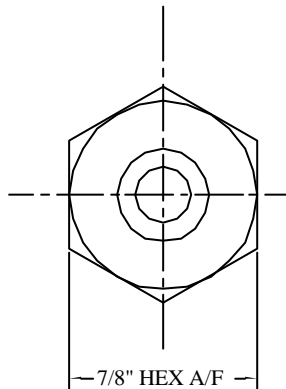
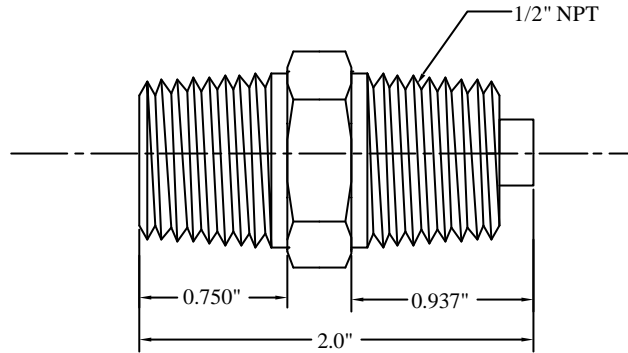
ALL DIMENSIONS ARE IN INCHES.

PART NO.	'A'	'B'	'C'	'D'	'E'	PROJECT/CLIENT
ATHF -OEB - 01	0.374	0.261	0.187	1.5	0.515	
ATHF - OEB - 02	0.298	0.198	0.187	1.5	0.515	TITLE
ATHF - OEB - 03	0.236	0.138	0.187	1.5	0.515	THERMOCOUPLE HEAD FITTINGS OPEN END BORE
MATERIAL: 316SS						This drawing is the property of Aura Inc. Unauthorised reproduction is prohibited.

Aura Inc.
D11/3,OKHALA IND. AREA,
PHASE II, NEW DELHI
INDIA.
www.aurainc.com

DRG NO : ATHF - OEB -001

REV.	REASON FOR ISSUE	DATE	DRN.	CHKD.
0.00	PRELIM.REL.	12.03.00	D.K.D.	G.G.A
1.00	REL. FOR MANU.	12.05.00	D.K.D.	G.G.A



ALL DIMENSIONS ARE IN INCHES.

PART NO.	'A'	'B'	'C'	'D'	'E'	PROJECT/CLIENT
						ATHF - SLF - 01
ATHF - SLF - 02	0.50	0.198	0.125	1.625	0.454	TITLE
ATHF - SLF - 03	0.50	0.138	0.125	1.625	0.454	THERMOCOUPLE HEAD FITTINGS SPRING LOAD TYPE
MATERIAL: 316SS						This drawing is the property of Aura Inc. Unauthorised reproduction is prohibited.

Aura Inc.
D11/3,OKHALA IND. AREA,
PHASE II, NEW DELHI
INDIA.
www.aurainc.com

DRG NO :ATHF - SLF -001