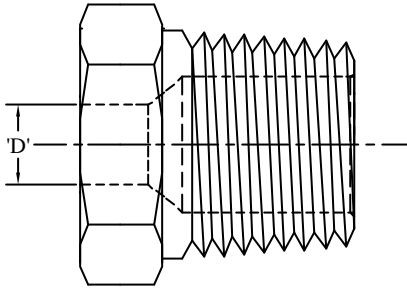
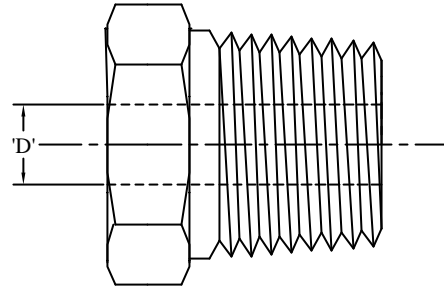


REV.	REASON FOR ISSUE	DATE	DRN.	CHKD.
0.00	PRELIM.REL.	12.03.02	D.K.D.	G.G.A
1.00	REL. FOR MANU.	12.09.02	D.K.D.	G.G.A



WITH STEP BORE



WITH THROUGH BORE

PART NO.	'D' DIM.	THREAD
ABPP-104-002	1/16"	1/8"NPT
ABPP-104-004	1/16"	1/4"NPT
ABPP-104-002	1/16"	1/2"NPT
ABPP-204-002	1/8"	1/8"NPT
ABPP-204-004	1/8"	1/4"NPT
ABPP-204-008	1/8"	1/2"NPT
ABPP-304-002	3/16"	1/8"NPT
ABPP-304-004	3/16"	1/4"NPT
ABPP-304-008	3/16"	1/2"NPT
ABPP-404-002	1/4"	1/8"NPT
ABPP-404-004	1/4"	1/4"NPT
ABPP-404-008	1/4"	1/2"NPT
ABPP-604-008	3/8"	1/2"NPT

PART NO.	'D' DIM.	THREAD
ABPP-104-002-BT	1/16"	1/8"NPT
ABPP-104-004-BT	1/16"	1/4"NPT
ABPP-104-002-BT	1/16"	1/2"NPT
ABPP-204-002-BT	1/8"	1/8"NPT
ABPP-204-004-BT	1/8"	1/4"NPT
ABPP-204-008-BT	1/8"	1/2"NPT
ABPP-304-002-BT	3/16"	1/8"NPT
ABPP-304-004-BT	3/16"	1/4"NPT
ABPP-304-008-BT	3/16"	1/2"NPT
ABPP-404-002-BT	1/4"	1/8"NPT
ABPP-404-004-BT	1/4"	1/4"NPT
ABPP-404-008-BT	1/4"	1/2"NPT
ABPP-604-008-BT	3/8"	1/2"NPT

ALL DIMENSIONS ARE IN INCHES.

PROJECT/CLIENT	<p>Aura Inc. D11/3,OKHALA IND. AREA, PHASE II, NEW DELHI INDIA. www.aurainc.com</p>
TITLE	
BRAZING / POTTING THREADED PLUGS	

This drawing is the property of Aura Inc.
Unauthorized reproduction is prohibited.

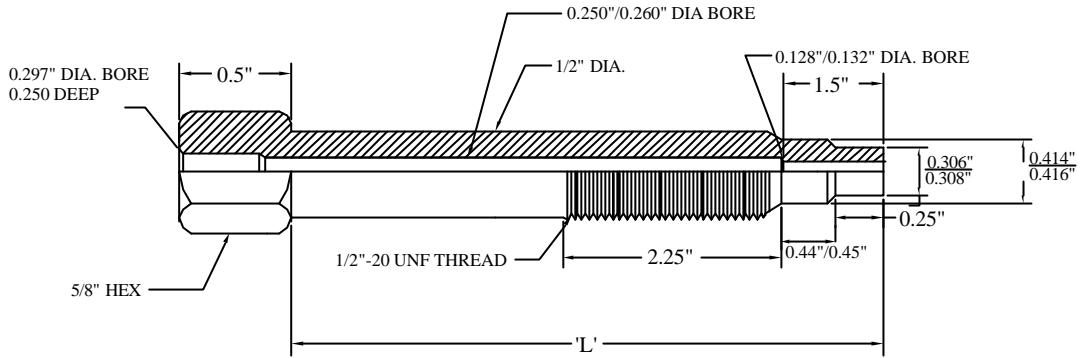
DRG NO :ABPP - STD -001

MATERIAL

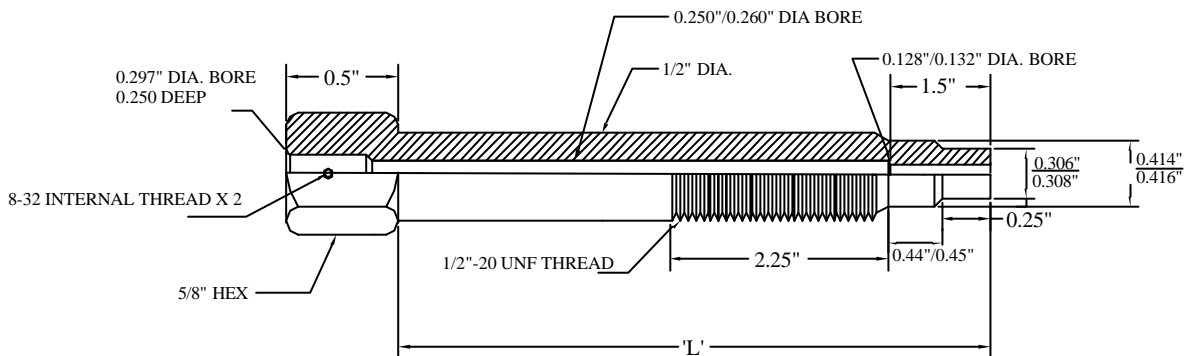
304 SS / C.S / ZINC PLATED

REV.	REASON FOR ISSUE	DATE	DRN.	CHKD.
0.00	PRELIM.REL.	16.03.00	D.K.D.	G.G.A
1.00	REL. FOR MANU.	12.07.00	D.K.D.	G.G.A

STANDARD MELT BOLT



MELT BOLT WITH SET SCREW FOR ARMOUR



STANDARD MELT BOLT

PART NO.	MATERIAL	'L'
AMTB-304-003	304 SS	3.0"
AMTB-304-004	304 SS	4.0"
AMTB-304-006	304 SS	6.0"
AMTB-304-009	304 SS	9.0"

MELT BOLT WITH SET SCREW FOR ARMOUR

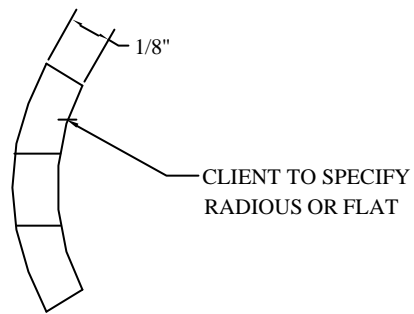
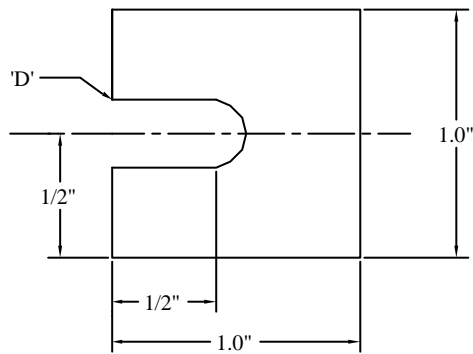
PART NO.	MATERIAL	'L'
AMTB-304-003X	304 SS	3.0"
AMTB-304-004X	304 SS	4.0"
AMTB-304-006X	304 SS	6.0"
AMTB-304-009X	304 SS	9.0"

NOTE: BLANK MELT BOLT AVAILABLE
ADD 'B' TO P/N. Eg. AMTB-304-003B

ALL DIMENSIONS ARE IN INCHES.

PROJECT/CLIENT	<p align="center">Aura Inc. D11/3,OKHALA IND. AREA, PHASE II, NEW DELHI INDIA. www.aurainc.com</p>
TITLE	
MELT BOLTS	
This drawing is the property of Aura Inc. Unauthorised reproduction is prohibited.	
DRG NO :AMTB-STD-001	

REV.	REASON FOR ISSUE	DATE	DRN.	CHKD.
0.00	PRELIM.REL.	12.03.01	D.K.D.	G.G.A
1.00	REL. FOR MANU.	12.05.01	D.K.D.	G.G.A



'D': ASPER CLIENTS REQUIRMENTS.

OPTIONAL MATERIAL: 316 SS

ALL DIMENSIONS ARE IN INCHES.

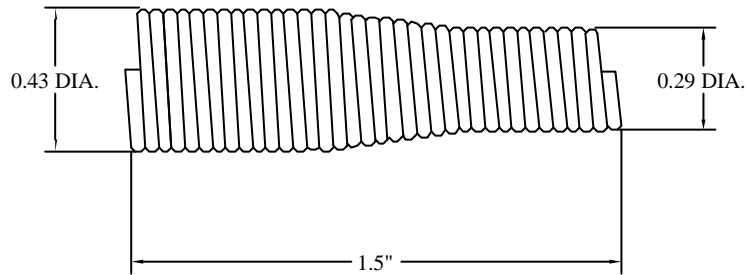
PART NO.	'D'	MATERIAL
AWPD - STD -304 - 02 - 001	1/8"	304 SS
AWPD - STD -304 - 03 - 001	3/16"	304 SS
AWPD - STD -304 - 04 - 001	1/4"	304 SS

PROJECT/CLIENT
TITLE
WELD PAD
This drawing is the property of Aura Inc. Unauthorised reproduction is prohibited.

Aura Inc.
D11/3,OKHALA IND. AREA,
PHASE II, NEW DELHI
INDIA.
www.aurainc.com

DRG NO : AWPD-STD-001

REV.	REASON FOR ISSUE	DATE	DRN.	CHKD.
0.00	PRELIM.REL.	12.03.02	D.K.D.	G.G.A
1.00	REL. FOR MANU.	12.06.02	D.K.D.	G.G.A



SPRING SUITABLE FOR ATHF-SWT SERIES TRANSITION FITTINGS

ALL DIMENSIONS ARE IN INCHES.

PROJECT/CLIENT	<p>Aura Inc. D11/3,OKHALA IND. AREA, PHASE II, NEW DELHI INDIA. www.aurainc.com</p>
TITLE	
STRAIN RELIEF SPRING	
This drawing is the property of Aura Inc. Unauthorised reproduction is prohibited.	
DRG NO :ASRS-STD-001	

MATERIAL: MUSIC WIRE

FINISH: ZINC PLATING