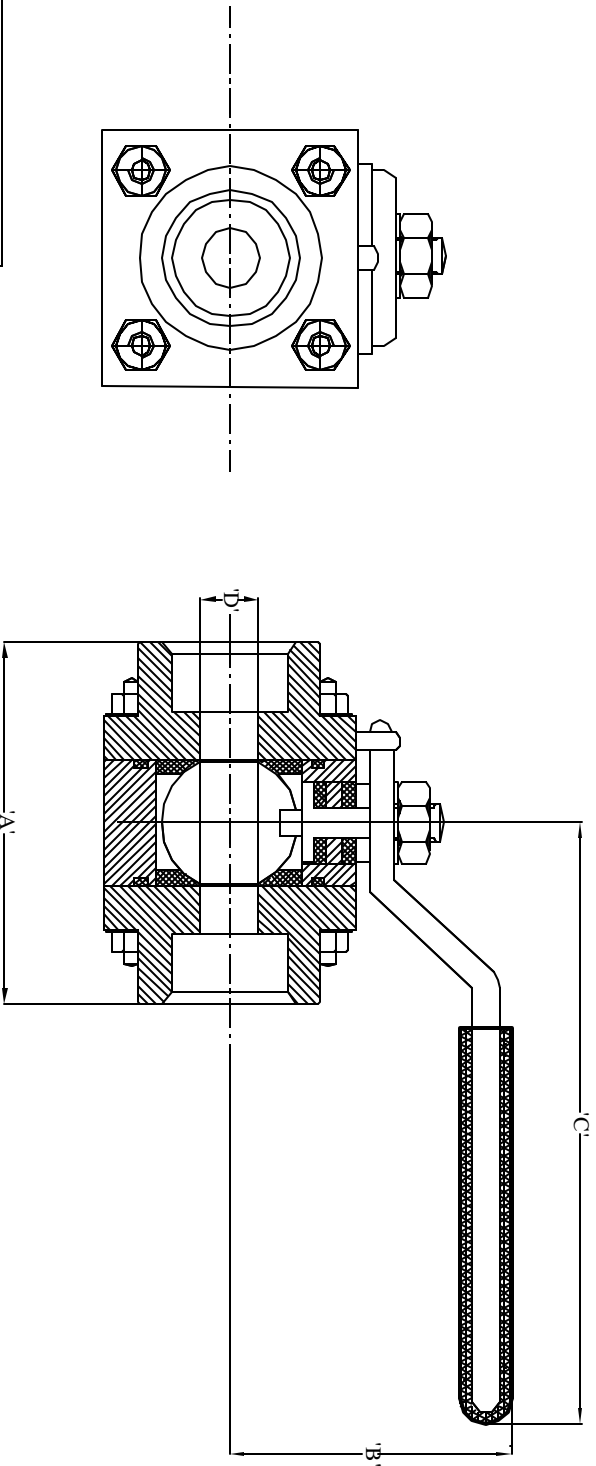


<b>DESCRIPTION</b>	: High pressure rating three piece body full port ball valve
<b>CONNECTIONS</b>	: Threaded NPT conforming to ASME B1.20.1
<b>BODY &amp; END FLANGES</b>	: Machined from 316L Bar Stock
<b>BALL</b>	: Machined to close tolerances from 316 SS material
<b>RETAINER</b>	: 316 SS
<b>BALL SEAT</b>	: PTFE
<b>BODY SEAL</b>	: PTFE
<b>STEM</b>	: 316 SS
<b>HANDLE</b>	: 304 SS With PVC sleeve
<b>PRESSURE RATING</b>	: 2,000 Psi
<b>TEMPERATURE LIMIT</b>	: 250 deg F
<b>SIZES</b>	: 1/2", 3/4", 1"
<b>TEST PRESSURES</b>	: Body : 2,500psi Seat and gland : 2,000psi
<b>OPTIONS</b>	: Material of construction conforming to NACE MR-01-75 Brass Body BSP Threads Socket weld and Butt weld ends
<b>AURA DRAWING REF.</b>	: ABV-3P-STD-001

REV.	REASON FOR ISSUE	DATE	DRN.	CHKD.
0.00	REL.FOR MANU.	12.3.03	D.K.D	G.G.A



PART NO. BUILD UP

ABV: AURA BALL VALVE

3P: THREE PIECE

XX: SIZE,04=1/4 , 06=3/8 ,08=1/2"

XXX: MATERIAL ,316 L, BRASS

XX: END CONNECTION

TD= THREADED ENDS , NPT(F)  
 SW= SOCKET WELD  
 BW= BUTT WELD

SIZE "p"	'A'	'B'	'C'	'D'
3/8"	2.95	2.19	4.50	0.50
1/2"	2.95	2.19	4.50	0.50
1"	3.66	2.36	5.75	1.00

NOTE: ALL DIMENSIONS ARE SUBJECT TO CHANGE WITHOUT ANY PRIOR NOTICE. TO BE USED FOR REFERENCE ONLY.

ALL DIMENSIONS ARE IN INCHES.

**PROJECT/CLIENT**

**TITLE**

THREE PIECE FULL PORT  
 BALL VALVE

**Aura Inc.**

D11/3,OKHALA IND. AREA,  
 PHASE II, NEW DELHI

INDIA.

www.aurainc.com

This drawing is the property of Aura Inc.  
 Unauthorised reproduction is prohibited.

DRG NO : ABV - 3P - STD - 001