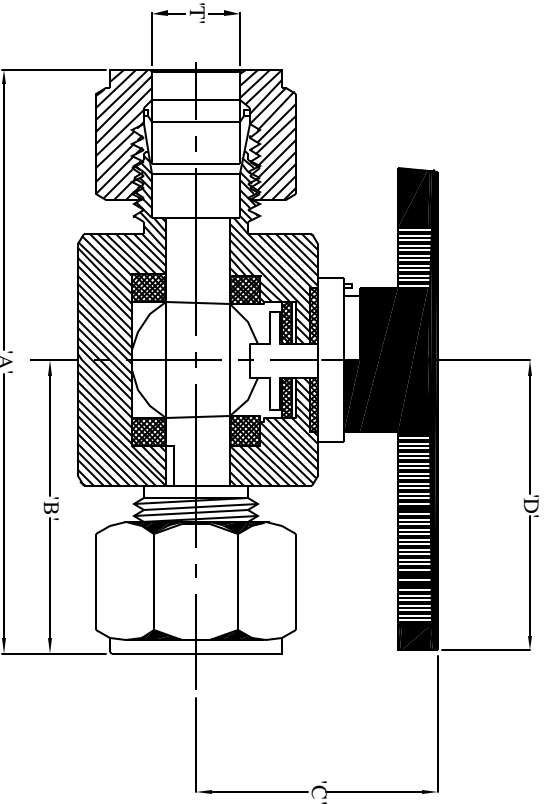


<b>DESCRIPTION</b>	: High pressure rated miniature tube end ball valves in straight and angle patterns.
<b>CONNECTIONS</b>	: Double ferrule compression tube ends.
<b>BODY</b>	: 316 SS
<b>BALL</b>	: Machined to close tolerances from 316 material
<b>RETAINER</b>	: 316 SS
<b>BALL SEAT</b>	: PTFE
<b>BODY SEAL</b>	: PTFE
<b>STEM</b>	: 316 SS
<b>HANDLE</b>	: Nylon
<b>PRESSURE RATING</b>	: 2000 Psi
<b>TEMPERATURE LIMIT</b>	: 250 Deg F
<b>SIZES</b>	: 1/4", 3/8", 1/2"
<b>TEST PRESSURES</b>	: Body : 3,000 Psi Seat and gland : 2,000psi
<b>OPTIONS</b>	: Material of construction conforming to NACE MR-01-75 Brass body
<b>AURA DRAWING REF.</b>	: ABV-1PI-STD-001

REV.	REASON FOR ISSUE	DATE	DRN.	CHKD.
0.00	REL FOR MANU.	12.9.05	D.K.D	G.G.A



ALL DIMENSIONS ARE IN INCHES.

PART NO. BUILD UP

ABV: AURA BALL VALVE

1PI: SINGLE PIECE INSTRUMENT

XX: SIZE,04=1/4, 06=3/8, 08=1/2"

XXX: MATERIAL, 316 SS,BRASS

TB: TUBE ENDS

SIZE "T"	'A'	'B'	'C'	'D'
1/4"	2.36	1.18	1.56	1.53
3/8"	3.05	1.52	2.07	2.00
1/2"	3.92	1.96	2.43	3.00

NOTE: ALL DIMENSIONS ARE SUBJECT TO CHANGE WITHOUT ANY PRIOR NOTICE. TO BE USED FOR REFERENCE ONLY.

PROJECT/CLIENT

TITLE

MINIATURE  
INSTRUMENT BALL VALVE

**Aura Inc.**

D11/3,OKHALA IND. AREA,  
PHASE II, NEW DELHI  
INDIA.

www.aurainc.com

This drawing is the property of Aura Inc.  
Unauthorized reproduction is prohibited.

DRG NO : ABV - 1PI - STD - 001